



MEETING MINUTES

Crane Lake
Voyageur's National Park Visitors Center and Campground
December 16, 2021 at 2:00 PM
SEH No. CRALT 163725

I. Attendees

- A. Dan Hinzmann, Jason Chopp, Rose Kopecky – SEH
- B. Mark Anderson, Jim Janssen, Gretchen Janssen – Crane Lake

II. Status Updates

- A. SEH
 - 1. Survey / CIC – Met with attorney, more info forthcoming (hopefully this week).
 - 2. Environmental (wetlands, contamination) – paused until layout determined.
 - 3. Soil Borings – Initial soil borings complete, will collect 3 additional (perhaps in January?).
 - 4. Archeological Investigation – Field work done.
 - 5. State Park Road Account – Submitted.
 - 6. Design – Proceeding with campground preliminary design
- B. ARI – waiting on site layout clearances to proceed

III. Discussion Items:

- A. Communications
- B. Funding status
 - 1. Visitor's center funding in place, still a question on the campground funding.
- C. Property ownership, CIC designation, county zoning
 - 1. Town discussed the zoning and contaminant issues. They determined that they would like to proceed with developing a schematic design which ignores the contamination and zoning concerns, assuming that these issues can be resolved at a later date. This might involve some redesign efforts should adjustments need to be made later. ARI to develop a schematic site layout with this criteria.
- D. Bayside Drive ownership
 - 1. SEH still working on identifying easements, etc.
- E. Other
 - 1. Campground layout review
 - a. Discussion on additional access road, what happens if you miss your turn?
 - b. Plan to include a fire ring at each site, but this isn't set in stone.
 - c. Might not be able to actually fit all 40 sites shown, but this is a goal. 35+ is desirable.
 - d. Wood sales may be a source of revenue for the campground.

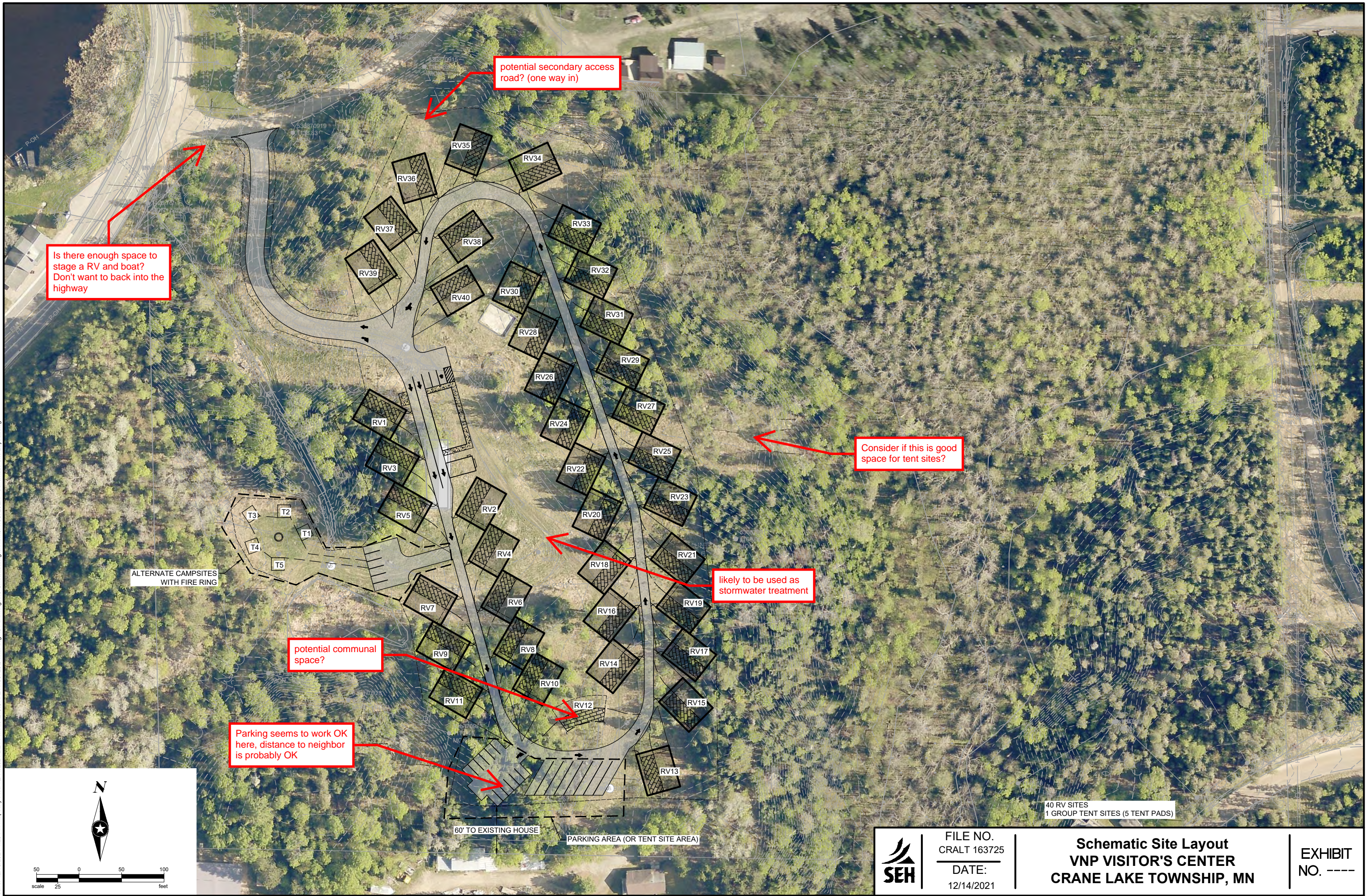
IV. Schedule

- A. Next meeting scheduled 1/4/2021 (pushing back 1 week due to the holidays).

V. Next Steps / To-Do's / Questions

- A. **ARI to develop schematic site layout.**
- B. **SEH to send Bayside Drive right of way needs exhibit.**
- C. **SEH to review requirements for conditional use permit.**
- D. **Town to review layouts (campground, buildings) included in agenda and provide feedback at next meeting.**

Save: 12/13/2021 4:25 PM ropackey Plot: 12/14/2021 2:21 PM X:\AEC\CRA\T\163725\5-final-dsp\51-drawings\10-Civil\dwg\exhibit\CA163725EX - Schematic Site Layout.dwg



potential secondary access road? (one way in)

Is there enough space to stage a RV and boat? Don't want to back into the highway

Consider if this is good space for tent sites?

likely to be used as stormwater treatment

potential communal space?

Parking seems to work OK here, distance to neighbor is probably OK

ALTERNATE CAMPSITES WITH FIRE RING

60' TO EXISTING HOUSE

PARKING AREA (OR TENT SITE AREA)

40 RV SITES
1 GROUP TENT SITES (5 TENT PADS)

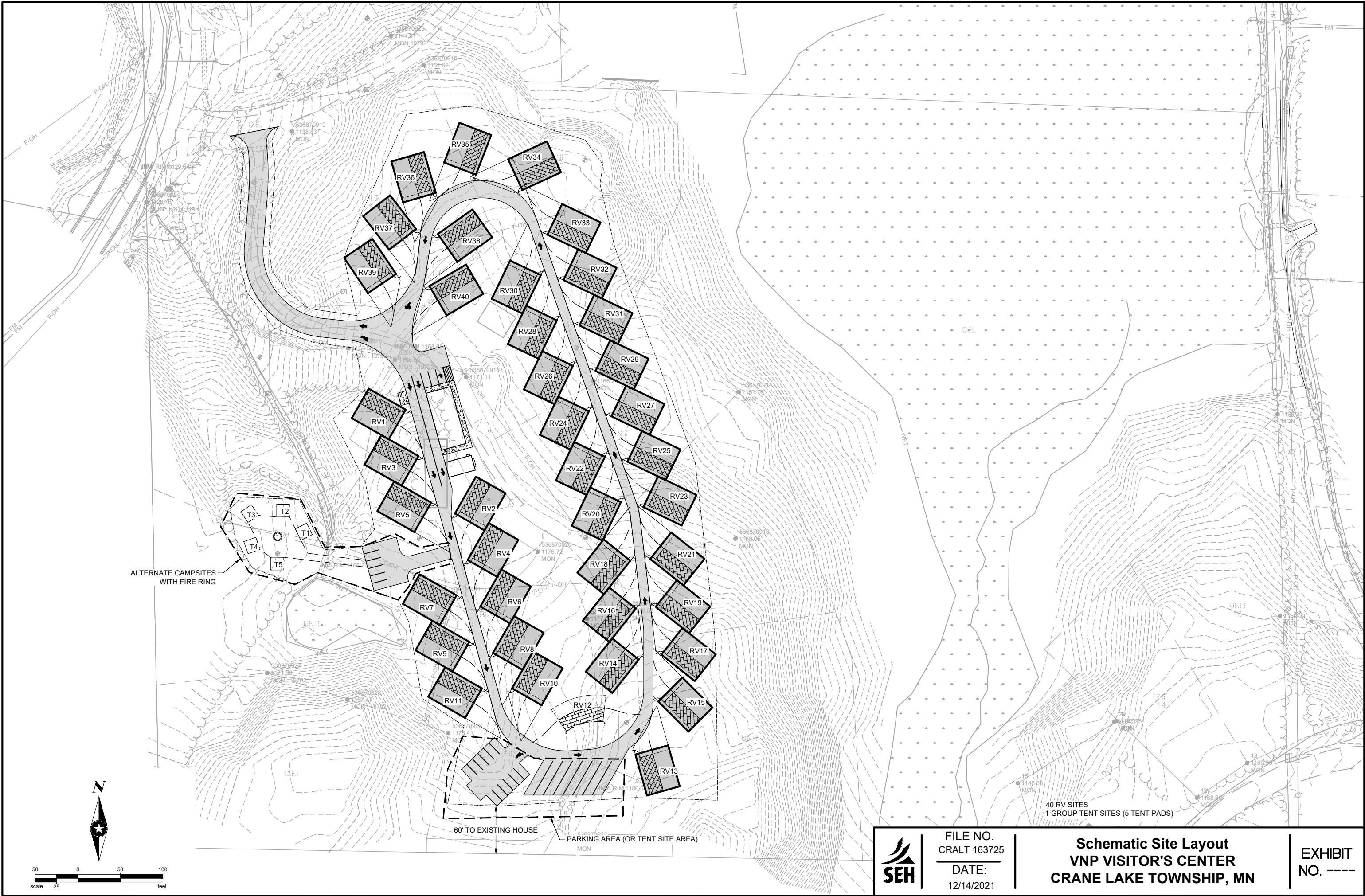


FILE NO.
CRA163725
DATE:
12/14/2021

Schematic Site Layout
VNP VISITOR'S CENTER
CRANE LAKE TOWNSHIP, MN

EXHIBIT
NO. ----

Save: 12/13/2021 4:25 PM ropackey Plot: 12/14/2021 2:11 PM X:\AEC\CRA\T\163725\5-final-dsnp\51-drawings\10-Civil\dwg\exhibit\CA163725EX - Schematic Site Layout.dwg

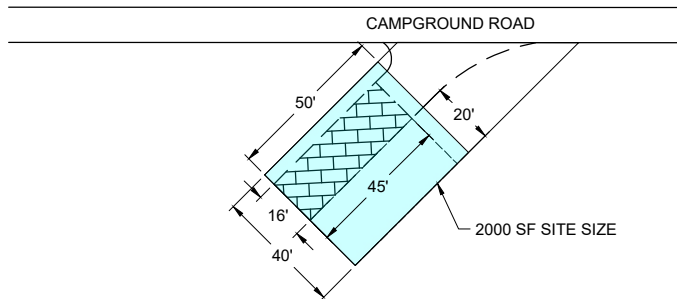


FILE NO.
CRA\T 163725
DATE:
12/14/2021

Schematic Site Layout
VNP VISITOR'S CENTER
CRANE LAKE TOWNSHIP, MN

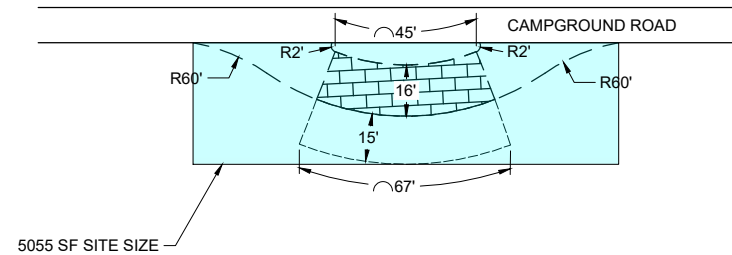
EXHIBIT
NO. ----

Save: 12/16/2021 10:38 AM hopecky Plot: 12/16/2021 10:39 AM X:\AEC\CRA\T1163725\5-final-dsgn\51-drawings\10-Civil\cadd\dwg\exhibit\CA163725EX - Site Sizing.dwg

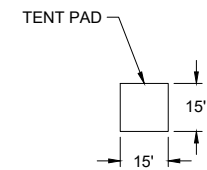


BACK-IN CAMPSITE PARKING

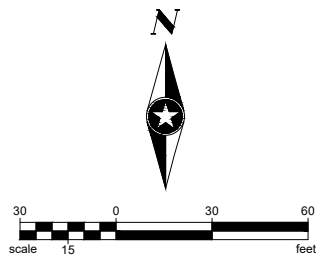
NOTE: MINIMUM SITE SIZE IS 2000 SF PER MN DOH.



PULL THROUGH CAMPSITE PARKING



TENT CAMPSITE



FILE NO.
CRA\T 163725
DATE:
12/16/2021

Site Sizing
VNP VISITOR'S CENTER
CRANE LAKE TOWNSHIP, MN

EXHIBIT
NO. ----

THIS LAYOUT IS FROM A PRIOR PROJECT, BUT IT SHOULD PROVIDE A SENSE TO WHAT THIS BUILDING MIGHT LOOK LIKE. IT WILL NEED TO BE SCALED DOWN TO MEET THE NEEDS OF OUR SITE.

Assuming the number of sites with RVs that aren't equipped with toilet and bathing facilities is 45 sites (40 RV & 5 tent sites).

SHOWER AREA
1 shower required.

TOILET AREA
2 toilets required.

URINAL AREA
1 urinal required.

LAVATORY AREA
3 lavatories required.

SHOWER AREA
1 shower required.

TOILET AREA
2 toilets required.

LAVATORY AREA
3 lavatories required.

GENERAL NOTES:

1. PROVIDE CONTROL JOINTS IN CONCRETE FLOOR SLAB PER DETAIL 1/A6, TYPICAL
2. SEE MECHANICAL FOR DUCTWORK PENETRATION THROUGH CMU WALLS, COORDINATE LOCATION AND PROVIDE LINTELS PER LINTEL SCHEDULE
3. STEP FOOTINGS AS REQUIRED TO MAINTAIN 5'-0" COVERAGE OVER FOOTING AND AROUND PIPING PER 2/A6 AND 3/A6

FLOOR PLAN KEYNOTES:

- 1 WHEEL CHAIR ACCESSIBLE RESTROOM STALL WITH 36" WIDE DOOR, SEE TYPICAL MOUNTING HEIGHTS AND LAYOUT FOR STALL AND ACCESSORIES
- 2 AMBULATORY RESTROOM STALL WITH 34" WIDE DOOR, SEE TYPICAL MOUNTING HEIGHTS AND LAYOUT FOR STALL AND ACCESSORIES
- 3 20"x30" INSULATED ATTIC SCUTTLE
- 4 BRACKET MOUNTED FIRE EXTINGUISHER (FE-2)
- 5 CABINET MOUNTED FIRE EXTINGUISHER (FE-1)
- 6 CONCRETE STOOP, SEE 4/A4
- 7 GRID LINE ALIGNS WITH EXTERIOR FACE OF FOUNDATION WALL
- 8 9" DEEP x 2'-0" LONG BENCH
- 9 HANDICAPPED ACCESSIBLE BENCH
- 10 DUAL-HEIGHT DRINKING FOUNTAIN
- 11 CONTROL JOINT IN MASONRY
- 12 4" THICK CONCRETE PAVEMENT OVER 6" COMPACTED GRANULAR FILL. PROVIDE TOOLED CONTROL JOINTS AT 5'-0" O.C.
- 13 INTEGRALLY COLORED CONCRETE FLOOR SLAB THIS ROOM
- 14 FIBERGLASS REINFORCED PANEL (FRP) WALL FINISH, 4'-0" HIGH, EXTEND 4'-0" HORIZONTALLY FROM MOP SINK
- 15 FLOOR MOUNTED MOP SINK, SEE MECHANICAL
- 16 SLOPE SHOWER STALL FLOOR DOWN TO DRAIN AT 1/4" PER FOOT
- 17 4" CONCRETE EQUIPMENT PAD, SEE MECHANICAL
- 18 MECHANICAL UNIT SUSPENDED FROM ROOF TRUSSES (400 POUND OPERATING WEIGHT)
- 19 PRE-FINISHED ALUMINUM LOUVER, MOUNT AS HIGH AS POSSIBLE, COORDINATE WITH MECHANICAL

LEGEND:

- RH ROBE HOOK
CR SHOWER CURTAIN AND ROD
GB GRAB BAR
FD FLOOR DRAIN
FSB FOLDING SHOWER BENCH
TPD TOILET PAPER DISPENSER
MIRR MIRROR
MCS MOP CLIP STRIP
SD SOAP DISPENSER
SND SANITARY NAPKIN DISPOSAL UNIT
HCP HANDICAP ACCESSIBLE
EHD ELECTRIC HAND DRYER
ICS INFANT CHANGING STATION

LINTEL SCHEDULE:

- OPENINGS UP TO 3'-4" IN WIDTH:
8"x8" CMU BOND BEAM (1 COURSE) WITH (2) #5 REBAR BOTTOM.
OPENINGS UP TO 6'-4" IN WIDTH:
8"x16" CMU BOND BEAM (2 COURSES) WITH (2) #5 REBAR BOTTOM AND TOP

NOTES:

1. ALL CMU LINTELS SHALL BEAR 8" MINIMUM ON FULLY GROUTED CMU EACH END.
2. GROUT AND REINFORCE TWO CORES EACH SIDE OF EACH LINTEL WITH SAME SIZE REBAR SPECIFIED FOR TYPICAL WALL REINFORCING. GROUT AND REINFORCE ONE CORE EACH SIDE OF LINTELS IN INTERIOR WALL.
3. BOND BEAMS DESIGNATED AS MORE THAN ONE COURSE HIGH SHALL UTILIZE A POUR-THROUGH BOND BEAM FOR UPPER COURSES IN RUNNING BOND WITH COURSE BELOW.
4. SHORE CMU LINTELS FOR ENTIRE LENGTH UNTIL BOND BEAMS ARE IN PLACE AND GROUT IS CURED.
5. BOTTOM REBAR TO BE MAINTAINED 2" MIN. CLEAR FROM BOTTOM OF BOND BEAM LINTEL OR GREATER IF REQUIRED FOR FIRE RESISTIVE CONSTRUCTION. CONTINUE HORIZONTAL REINFORCING TO END OF BEARING.

1 FLOOR PLAN

FINISHED FLOOR ELEVATION (FFE) SHOWER BUILDING = 100'-0" = 1491.0'

DRAWN BY: —
DESIGNER: —
CHECKED BY: —
DESIGN TEAM

NO. BY DATE
07/27/2020 PERMIT SET

REVISIONS

I HEREBY CERTIFY THAT THIS PLAN, SPECIFICATION, OR REPORT WAS PREPARED BY ME OR UNDER MY DIRECT SUPERVISION AND THAT I AM A DULY LICENSED ARCHITECT UNDER THE LAWS OF THE STATE OF MINNESOTA
Scott Blank
SCOTT BLANK, AIA
Date: 09/01/2020 Lic. No. 51092

PHONE: 218.741.4284
615 9TH ST N
VIRGINIA, MN 55792-3761
www.sehinc.com

BABBITT,
MINNESOTA

SHEET CONTENTS

FLOOR PLAN
BABBITT PUBLIC RV PARK

FILE NO.
BABB 144900

A1

A8 ✓